

Beat the Odds!

National assessments of Adult Learners 20 years ago revealed a lacklustre performance of below Level 2 for AET in Mathematical Literacy.

Today, the statistics are no better.



At **Kitso Training and Development**, we are proud of our ability to surpass expectations. Any learner, with a willing employer, can enjoy mathematical excellence

that goes beyond just literacy.

KITSO Training and Development Pass Rate AET L4 Maths (NQF Level 1)

2009		87%
2010		90%

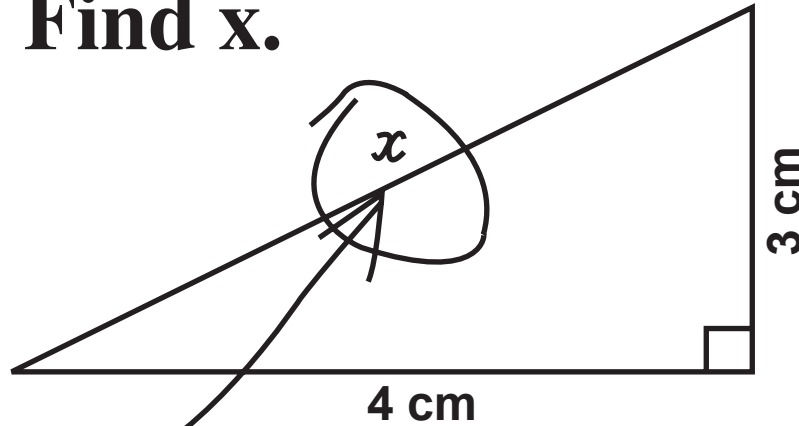
Our KIPP approach at KITSO uses the 3-tier strategy to migrate learners from L1 to stellar pass rates at L4. Using learner innate talents, their experiences and the KITSO Extraction Technique®, we create learner environments that build confidence and breed success.

“Back in the early 90’s when I assessed adults at local mines and factories, I found the functional level of numeracy below AET L2. Sadly, even today, the majority of learners I assess are placed at (or below) AET L2.”

- Mr Erik Hallendorff



3. Find x.



Here it is

The simplest solutions are often the most obvious.

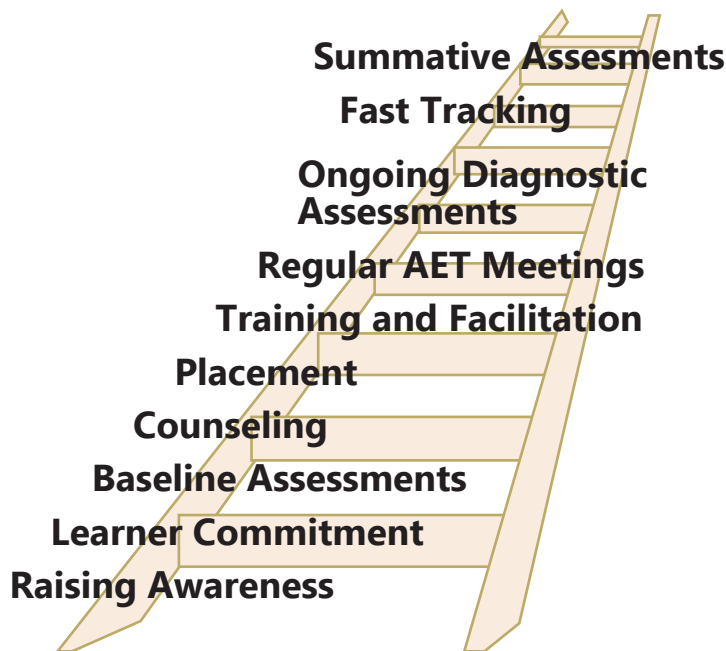
KIPP

The KITSO Implementation Plan and Process

Using our 3-tier strategy that culminates in the KITSO Extraction Technique®, we help learners achieve beyond their expectations using simple, but effective innate behaviours, to become more valuable to employers, to their families, themselves and to the community at large.



KITSO
Training and Development



“Maths is not just a subject, it is a vital life skill. It is a necessary tool used and applied in all areas of our lives.”

- Thuto Moloko